

GENERAL PURPOSE 20.5" LADDER

20.5" General Purpose ladder truss is suitable for small loads and added lighting positions. Ladders are easily stacked and stored away when not in use.

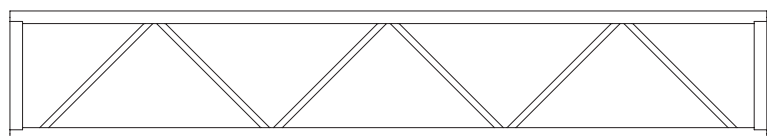


Standard lengths and weights

PRODUCT CODE	DESCRIPTION	WT lbs
LD20GP120	10' Section	29
LD20GP096	8' Section	20.02
LD20GP084	7' Section	18.80
LD20GP072	6' Section	16.57
LD20GP060	5' Section	14.57
LD20GP048	4' Section	12.57
LD20GP024	2' Section	11.57



Plan View



Side View



End View