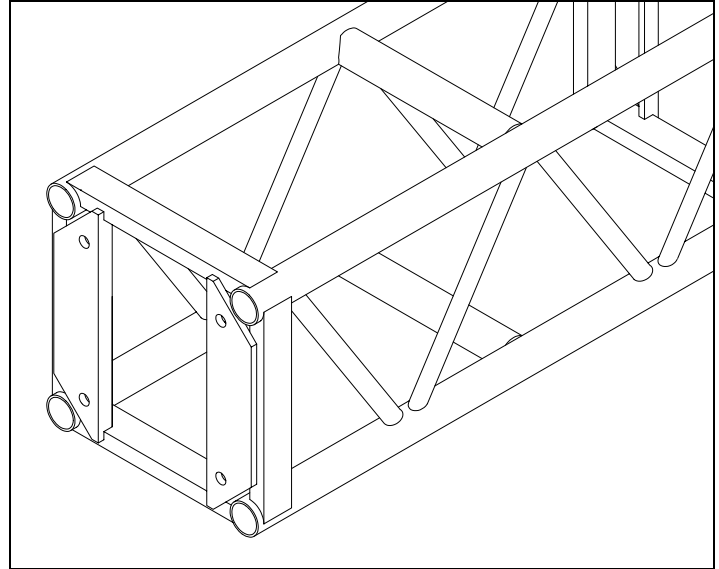


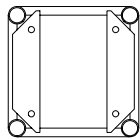
15" x 15" General Purpose truss is manufactured from 2" dia x 0.125" wall and 1" dia x 0.125" wall 6082T6 or 6061T6 Aluminium tubing. Bolts are supplied assembly of truss elements. This truss is ideal for conference, exhibition, and small venue work. By incorporating suitable sleeve blocks and towers, this truss can be used with our Ground Support Systems.

PRODUCT CODE	DESCRIPTION	WT lbs
B1510	10' Section	61.5
B1508	8' Section	53
B1505	5' Section	39.5
B1525	2' 6" Section	27.5
B1502	2 Way Corner Block	18.5
B1503	3 Way Corner Block	21
B1504	4 Way Corner Block	24
B1506	6 Way Corner Block	28.5
B1507	Flat Plate Hinge Section	20

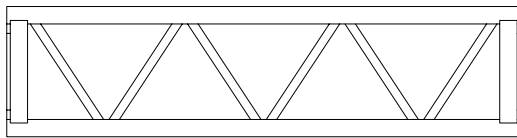


Allowable Load Data	Maximum Allowable Uniform Loads		Maximum Allowable Center Point Loads		
	Span feet (meters)	Loads pounds (kgs)	Maximum deflection inches (mm)	Loads pounds (kgs)	Maximum deflection inches (mm)
	10 (3.048)	9200 (4173)	0.17 (4)	4600 (2086)	0.17 (4)
	15 (4.572)	6100 (2766)	0.38 (9)	3050 (1383)	0.38 (9)
	20 (6.096)	4500 (2041)	0.67 (17)	2250 (1020)	0.67 (17)
	25 (7.62)	3500 (1587)	1.04 (26)	1750 (793)	1.04 (26)
	30 (9.144)	2900 (1315)	1.50 (38)	1450 (657)	1.50 (38)
	40 (12.192)	2000 (907)	2.67 (67)	1000 (453)	2.67 (67)
	50 (15.24)	1300 (589)*	3.75 (95)	650 (294)*	3.75 (95)
	55 (16.76)	1000 (453)*	4.13 (104)	500 (226)*	4.13 (104)

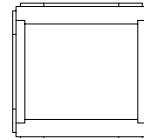
LOADING FIGURES show maximum loads between supports in addition to self weight of truss. Information extracted from structural report by Jessie Mise. \*Denotes load limited to a maximum deflection of (span /160). All loads include a 20% overload factor for dynamic effects.



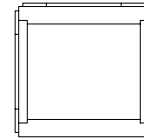
End View



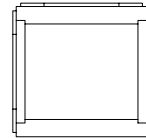
Side View



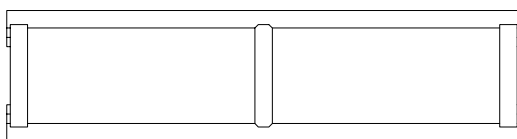
4 Way



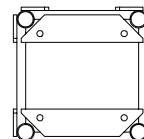
3 Way



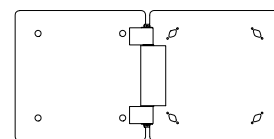
2 Way



Plan View



6 Way



Flat Pivot Section