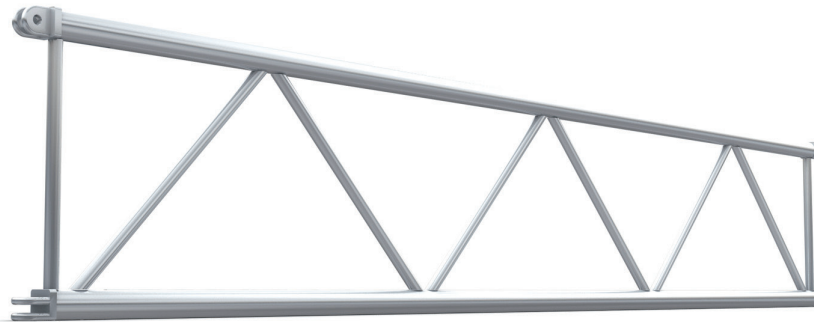


SUPERTRUSS 20.5" LADDER

20.5" SuperTruss ladder is suitable for small loads and added lighting positions. With spigoted ends, loads are carried more efficiently along the truss. Spigots are turned so that runs of truss will not pivot at each connection location. Ladders are easily stacked and stored away when not in use.

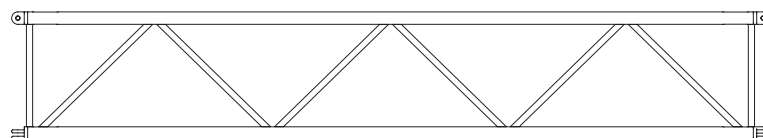


Standard lengths and weights

PRODUCT CODE	DESCRIPTION	WT lbs
LD20ST120	10' Section	34.51
LD20ST096	8' Section	32.6
LD20ST084	7' Section	28.17
LD20ST072	6' Section	26.63
LD20ST060	5' Section	24.06
LD20ST048	4' Section	22.98
LD20ST024	2' Section	20.07



Plan View



Side View



End View