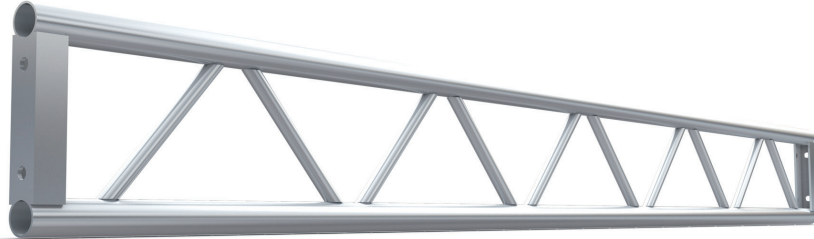


# GENERAL PURPOSE 12" LADDER

12" General Purpose ladder truss is suitable for small loads and added lighting positions. Ladders are easily stacked and stored away when not in use.



## MAIN CHORDS:

Chords are constructed of 2" outside diameter tubes with a wall thickness of 0.125" (1/8").

## DIAGONALS:

Diagonals are made from 1 inch outside diameter tubes with a wall thickness of 0.125" (1/8").

## CHANNEL:

End Bracing Channel:

End bracing is constructed of 2 inch x 2 inch channel with a wall thickness of 1/4". Bolt hole centers are 140mm (5.51").

## FASTENERS:

Ladders are fastened together using (2) 5/8" UNC x 2" Bolt sets (grade 8).

## WELDING:

Thomas truss is welded by certified welders in accordance with American National Standard ANSI/AWS D1.2-97.

## DESIGN AND MANUFACTURING:

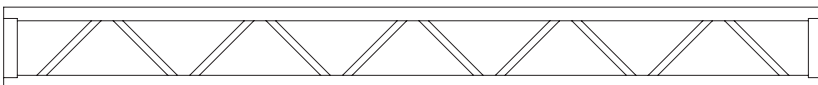
In accordance with the applicable sections of ANSI E1.2 -2000. "Design, Manufacture and Use of Aluminum Trusses and Towers"

## Standard lengths and weights

PRODUCT CODE	DESCRIPTION	WT lbs
LD12GP120	10' Section	23.5
LD12GP096	8' Section	20.02
LD12GP084	7' Section	16.80
LD12GP072	6' Section	14.57
LD12GP060	5' Section	12.57
LD12GP048	4' Section	10.57
LD12GP024	2' Section	8.57



Plan View



Side View



End View