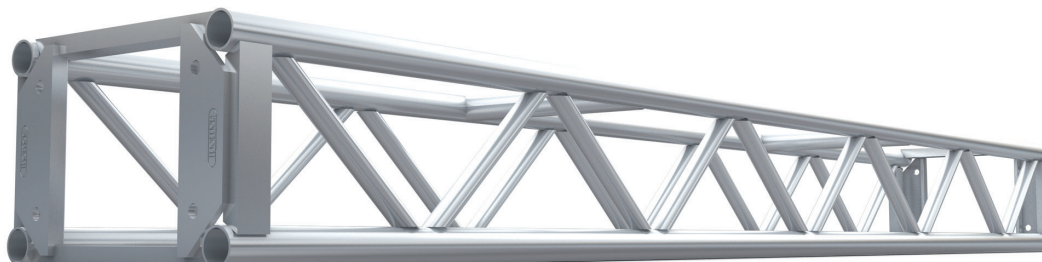


# GENERAL PURPOSE TRUSS 18 × 12

18" x 12" manufactured the same way as 12" x 12", but has an added advantage due to its width of 18", of being able to accommodate 2 lighting bars back to back. The truss is also slightly stronger over longer spans. It is made from 6061T6 or 6082T6 alloy 2" x 0.125" tubes for the main chords and 1" x 0.125" tubes for the diagonals. The truss can be used with Ground Support System with suitable sleeve blocks.

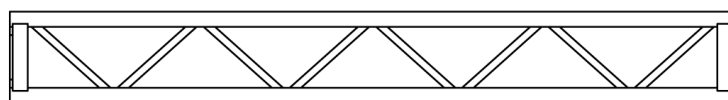


## Standard lengths and weights

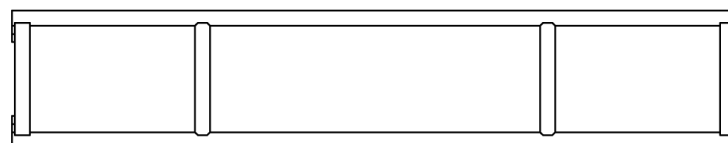
PRODUCT CODE	DESCRIPTION	WT lbs
B0600	10' Section	61.5
B0601	8' Section	52.5
B0602	5' Section	37.5
B0603	2' 6" Section	24

## Corners

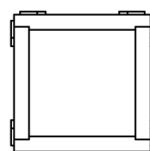
PRODUCT CODE	DESCRIPTION	WT lbs
B4608	4 Way Corner Block	22
B4609	5 Way Corner Block	25.5
B4610	6 Way Corner Block	29



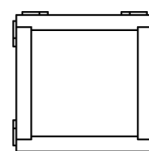
Side View



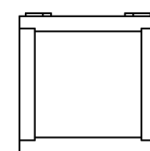
Plan View



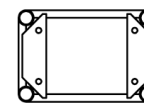
4 Way



3 Way



2 Way



End View

## Loading chart

Allowable Load Data	Maximum Allowable Uniform Loads		Maximum Allowable Center Point Loads	
	Span feet	Loads pounds	Maximum deflection inches	Loads pounds
10	6140	0.276	4497	0.20
20	3100	1.10	1550	1.10
30	1726	2.20	864	2.20
40	855	2.95	427	2.95
50	425	3.70	214	3.70

**LOADING FIGURES** show maximum loads between supports in addition to the self weight of the truss. Information extracted from the structural report by Broadhurst, Goodwin, and Dunn for Truss manufactured after November 1993. \* denotes load limited to suit maximum shear capacity. All loads include 20% overload factor for dynamic effects.